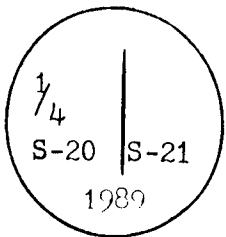


'89 MAY 8 PM 4 38

CERTIFIED LAND CORNER RECORDATION

DESCRIPTION OF CORNER EVIDENCE FOUND, AND ORIGINAL RECORD (If known)



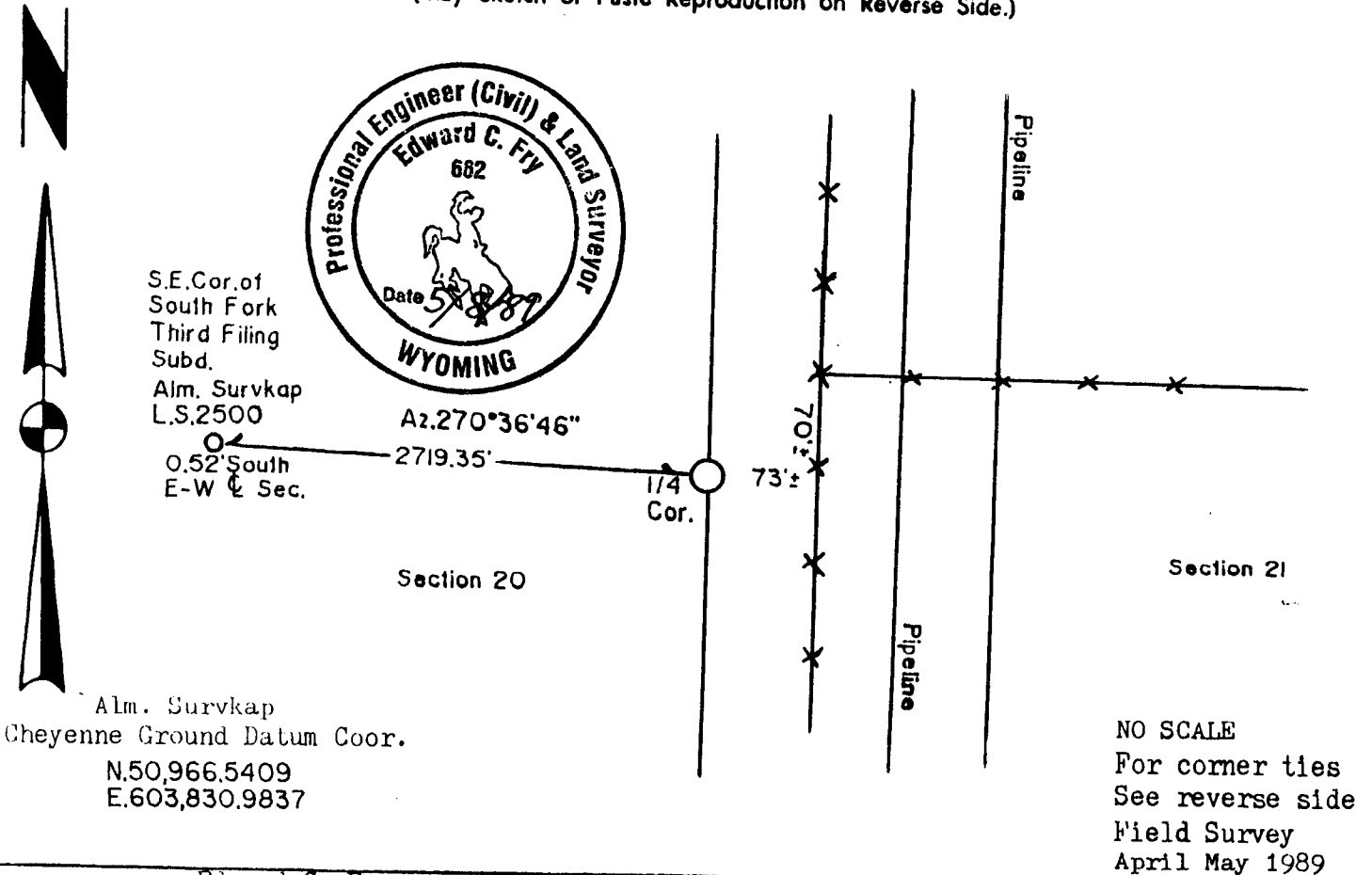
Found a marked stone. The G.L.O. monument is described as a granite stone 16"x8"x7" set in the year 1870.

T 13 N R 66 W

DESCRIPTION OF MONUMENT AND ACCESSORIES ESTABLISHED TO PERPETUATE THE ORIGINAL LOCATION OF THIS CORNER:

Removed stone and set a 2"x24" O.D. galvanized iron pipe with a aluminum survkap with one quarter and section numbers stamped on it 4" above ground. Set stone along the west side of iron pipe corner.

SKETCH, WITH COURSE AND DISTANCE TO ADJACENT CORNER IF DETERMINED IN THIS SURVEY. (May Sketch or Paste Reproduction on Reverse Side.)



I, Edward C. Fry certify that I have carefully ~~performed~~ reviewed the work done on the diagrammed corner as reported on this recordation form and approve the same.

Edward C. Fry
Signature of Surveyor

P.E./L.S. #662

Registration No.

STATE OF WYOMING,
Office of Clerk and Recorder,
County of _____

This "corner record" was filed for record on the _____ day of _____, 19____, was noted on the cross-index plat and is assigned page No. _____, in book No. _____.

County Official			
Cross Index No. <u>P-9</u>	T. <u>13</u>	R. <u>66</u>	Mer.
_____	T. _____	R. _____	Mer.
_____	T. _____	R. _____	Mer.
_____	T. _____	R. _____	Mer.
_____	T. _____	R. _____	Mer.
_____	T. _____	R. _____	Mer.
_____	T. _____	R. _____	Mer.

